

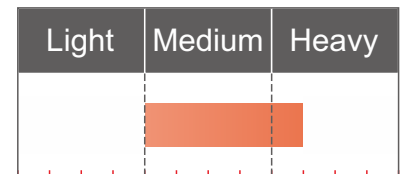
GC303-1SB

UNIQUE

Computerized walking foot single needle lockstitch sewing machine with step motor technology

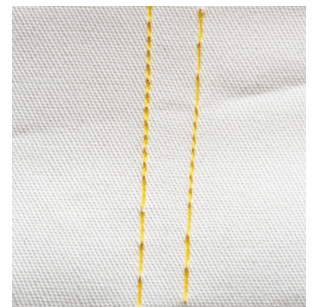
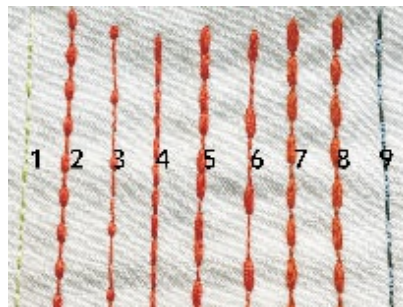
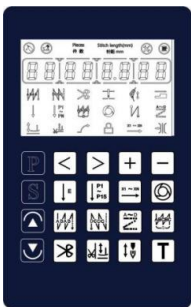


1-needle stitch



■ Features

- Walking foot feeding mechanism and large capacity hook
- With the latest step motor technology to control the fabric feeding mechanism.
- Precise digital stitch length adjustment by every 0.1mm, easy to use.
- With 9 built-in different patterns of seams.
- Back reverse stitching ultra-quiet and stable.
- Tight seam function - after trimming the length of the thread left is within 3MM.
- Buttons for supplement stitches can immediately switch it to 1/2 and 1/4 of the previous stitch length.



Suitable for leather, bag, luggage, mat, sofa and upholstery



MORE INFORMATION

UNIQUE

■ Technical Specification

| | |
|----------------------|------------------------------------|
| Model | GC303-1SB |
| Max. speed | 2,800sti/min |
| Lubrication | Automatic |
| Needle type | DPX17 (14-22#) |
| Max. stitch length | 8mm |
| Pesser foot lift | 6-13mm |
| Bobbin thread winder | Built-in the machine head |
| Power | 550W |
| G/N weight & volume | 45/39kgs,750*255*495mm=0.095cbm |
| Complete set | With stand & table 73kgs, 0.182cbm |